



HARRIS
School Solutions

QSSUG

Purchasing, Stores, Fixed Assets
Committee

Stores – Initial Setup and Security Options
November 29, 2018

Stores – Initial Setup and Security Options

- System Security
- User Security
- Warehouse Setup
- Warehouse Parameters
- Fiscal Year Control

Stores – System Security – Server User Maintenance

System Security 39 - QSS DEMO(the train 29410) QSS/OASIS

File Options Help+Video

Inspector

User/Class Application/Module/Task Menu Class Security System Setup

Printer Class Assignment GUI User Maintenance **Server User Maintenance** Copy Functions Class Maintenance Printer Maintenance User Class Assignment

Search columns: Show partial matches

Audit ID	Access	Superuser	Local Printer	EC Type/Name	EC Override DI	EC Override YR	EC Active	EC Create PO	EC Post Flag	JCW1	JCW2	JCW3	JCW4	JCW5	JCV
DA11	Y	Y	3									0001	9999	0001	
DA12	Y	Y	3									0001	9999		
DA14	Y	Y	3									0001	9999	0001	
DA15	Y	Y	3									0001	9999	0001	
DA16	Y	Y	3									0001	9999	0001	
ASUP	Y	Y	3												
BTC1	Y	Y	3												
BTC2	Y	Y	3												
CBO	Y	Y	3												
DCDG	Y	Y	3												
CTLR	Y	Y	3												
DAPD	Y	Y	3												
DJFL	N	Y	3												
DLLD	N	Y	3												
DEAM	Y	Y	3												
dans	Y	Y	3									0001	9999		
PADM	Y	Y	3												
PAOR	Y	N	3												
PAOR	Y	Y	3												
PBR1	Y	Y	3												
PBR2	Y	Y	3												

Stores – System Security – Class Task Security

System Security 26 - QSS STORES DISTRICT QSS/OASI

File Options Help+Video

Inspect

User/Class Application/Module/Task Menu Class Security System Setup

Class Task Security Copy Class Security Option Layouts User Security User Seg Layouts

Class: ADMIN App ID: QSTORES Type: *All Types Search: Show partial matches

Modules

Available	Application	Module	Description	Type	Class Option	Mod Option	Class Access	Mod Access	Cls Enabled	Mod Enabled
Yes	QSTORES	SRUPDT	Stores Receipts (SRUPDT)	Exe			Write	Write	Yes	Yes
Yes	QSTORES	SS1100	Warehouse Parameters (SS1100)	Report			Write	Read	Yes	Yes
Yes	QSTORES	SSUPDT	Warehouse Parameters (SSUPDT)	Exe			Write	Write	Yes	Yes
Yes	QSTORES	ST1010	Stock Catalog (ST1010)	Report			Write	Read	Yes	Yes
Yes	QSTORES	ST1500	Stock Item Tracking (ST1500)	Report			Write	Read	Yes	Yes
Yes	QSTORES	ST1600	Site Activity (ST1600)	Report			Write	Read	Yes	Yes
Yes	QSTORES	STORES	Stores Main Program	Exe			Write	Write	Yes	Yes
Yes	QSTORES	STPROD	Stores Prog-Options and Odometers (STPROD)	Exe			Write	Write	Yes	Yes
Yes	QSTORES	CVLDD1	Warehouse (CVLDD1)	Exe			Write	Write	Yes	Yes

Tasks

Available	Task ID	Description	Class Option	Task Option	Class Access	Task Access	Class Enabled	Task Enabled
Yes	MAIN	MAIN			Write	Write	Yes	Yes

Yr:2009 Dist:26 Site:1 GS: W 5/9/2015 8:34 AM

Stores – System Security – Class Task Security

System Security 26 - QSS STORES DISTRICT QSS/OASI

File Options Help+Video

User/Class | Application/Module/Task | Mgr | **Class Security** | System Setup

Class Task Security Copy Class Security Option Layouts User Security User Sec Layouts

Class: ADMIN App ID: QSTORES Type: Exe Search: Show partial matches

Modules

Available	Application	Module	Description	Type	Class Option	Mod Option	Class Access	Mod Access	Cls Enabled	Mod Enabled
Yes	QSTORES	SCUPDT	Stock Classes (SCUPDT)	Exe			Write	Write	Yes	Yes
Yes	QSTORES	SKTFRS	Stock Transfers (SKTFRS)	Exe			Write	Write	Yes	Yes
Yes	QSTORES	SKTRCK	Stock Activity Lookup (SKTRCK)	Exe			Write	Write	Yes	Yes
Yes	QSTORES	SKUPDT	Stock Items (SKUPDT)	Exe			Write	Write	Yes	Yes
Yes	QSTORES	SOUPDT	Stores Orders (SOUPDT)	Exe			Write	Write	Yes	Yes
Yes	QSTORES	SRUPDT	Stores Receipts (SRUPDT)	Exe			Write	Write	Yes	Yes
Yes	QSTORES	SSUPDT	Warehouse Parameters (SSUPDT)	Exe			Write	Write	Yes	Yes
Yes	QSTORES	STORES	Stores Main Program	Exe			Write	Write	Yes	Yes
Yes	QSTORES	STPROP	Stores Prop. Options and Attributes (STPROP)	Exe			Write	Write	Yes	Yes

Tasks

Available	Task ID	Description	Class Option	Task Option	Class Access	Task Access	Class Enabled	Task Enabled
<input checked="" type="checkbox"/>	MAIN	Main			Write	Read	Yes	Yes

Yr:2009 Dist:26 Site:1 GS: W 5/9/2015 8:51 AM

Stores – System Security – Class Task Security

System Security 26 - QSS STORES DISTRICT QSS/OASI

File Options Help+Video

User/Class | Application/Module/Task | Menu • Class Security | System Setup

Change

Class Task Security Copy Class Security Option Layouts User Security User Seg Layouts

Class: ADMIN App ID: QSTORES Type: Report Search: Show partial matches

Modules

Available	Application	Module	Description	Type	Class Option	Mod Option	Class Access	Mod Access	Cls Enabled	Mod Enabled
Yes	QSTORES	BI1100	Back Issue Transactions (BI1100)	Report			Write	Read	Yes	Yes
Yes	QSTORES	BI1101	Back Issues without Issue Backs (BI1101)	Report			Write	Write	Yes	Yes
Yes	QSTORES	BI1102	Issue Backs not on a Pick List (BI1102)	Report			Write	Write	Yes	Yes
Yes	QSTORES	BI1103	Issue Backs on an Unfiled Pick List (BI1103)	Report			Write	Write	Yes	Yes
Yes	QSTORES	BI1110	Back Issue Status (BI1110)	Report			Write	Read	Yes	Yes
Yes	QSTORES	BI1200	Autopost Back Issues (BI1200)	Report			Write	Write	Yes	Yes
<input checked="" type="checkbox"/>	QSTORES	BO1100	Back Order Transactions (BO1100)	Report			Write	Read	Yes	Yes
Yes	QSTORES	CA1100	Cancel Transactions (CA1100)	Report			Write	Read	Yes	Yes
Yes	QSTORES	CP1100	Credit Transactions (CP1100)	Report			Write	Read	Yes	Yes

Tasks

Available	Task ID	Description	Class Option	Task Option	Class Access	Task Access	Class Enabled	Task Enabled
<input type="checkbox"/>								

Yr:2009 Dist:26 Site:1 GS: W 5/9/2015 8:57 AM

Stores – User Security

Table 6-3: User security records for modules in the QSTORES application

BRANCH	COMMAND	USER SECURITY	PAGE
[All branches]	[General set-up options for access to fiscal years, shared windows, and warehouses]	RC1100	6-22
		SKINSP	6-24
		STEDELIM	6-30
		STGLDI	6-30
		STRCWACC	6-30
		STRFYACC	6-30
		STRSIACC	6-31
		STRWHACC	6-31
Stores Master File Maintenance	Warehouses (SXUPDT/1)	SXUPDT	6-32
	Warehouse Parameters (SSUPDT)	SSUPDT	6-29
	Warehouse Locators (SXUPDT/2)	SXUPDT	6-32
	Sites (SXUPDT/3)	SXUPDT	6-32
	Warehouse-Site Parameters (WSUPDT)	WSUPDT	6-33
	Warehouse Fiscal Year Control (FYUPDT)	FCUPDT	6-17
	Stock Classes (SCUPDT)	SCUPDT	6-24
	Stock Items (SKUPDT)	ATTCHSK SKUPDT	6-42 6-25
	Stock-Site Parameters (KSUPDT)	KSUPDT	6-21
	Stores Prog-Options and Odometers (STUPDT)	none	none
Warehouse Tasks	Stores Orders (SOUPDT)	ATTCHSO	6-42
		SOUPDT	6-27
	Stores Receipts (SRUPDT)	ATTCHSR	6-42
		SRUPDT	6-27
	Stock Adjustments (SAUPDT)	ATTCHSA	6-42
		SAUPDT	6-23
	Stock Transfers (SKTFRS)	SKTFRS	6-24
Pick List Resolution (PLUPDT)	PLUPDT	6-21	

Stores – User Security

Table 6-3: User security records for modules in the QSTORES application - continued

BRANCH	COMMAND	USER SECURITY	PAGE	
Issue Requisition Tasks	Issues (ISUPDT)	ATTCHIS	6-42	
		ISUPDT	6-18	
		ISYRyy	6-21	
		ISUPBKFT	6-39	
		ISUPBKfV	6-39	
		ISUPBKFn	6-40	
		ISUPDTTfT	6-40	
		ISUPDTfV	6-40	
		ISUPDTFn	6-41	
		ISUPDTfX	6-41	
		STRLVLPW	6-42	
		Issue Approval (IAUPDT)	IAUPDT	6-17
			IAUPDTfT	6-38
	IAUPDTfV		6-38	
	IAUPDTTfFn		6-38	
	IAUPDTTfX		6-39	
	STRSIAPP		6-42	
	STRLVLPW		6-42	
	Back Issues (BIUPDT)	ATTCHBI	6-42	
		BIUPDT	6-14	
	Credits (CRUPDT)	ATTCHCR	6-42	
		CRUPDT	6-16	
		CRUPBT	6-15	
	Stock Activity Lookup (SKTRCK)	BIUPDT	6-14	
		SKTRCK	6-25	
		STGLDI	6-30	
	Stores Stock Reports	Stock Inventory (SK1205)	SK1205	6-25
Stores Orders / Receipts Reports	Order Status (SO1200)	SO1200	6-27	
Stores Issues / Credits Reports	Back Issue Status (BI1100)	BI1100	6-13	
Stores Processes	Year-End Stores Rollover Processing (FY1200)	STRYRE	6-32	
	Stores Financial Encumbrance Report and Correction (FY1300) (Version L only)	STRYRE	6-32	

Stores – User Security

Table 6-4: BI1100 USERSEC parameters for the BI1100 module

COL	CONTROLS	DESCRIPTION
01 - 02	Printing issue description on the report	<p>00 to 30 Number of characters of the issue description to print on the report.</p> <p>If the value is 00, the report will print the full site name and none of the issue description.</p> <p>If the value is 30, the entire issue description will be printed (default) and none of the site name.</p> <p>Any other number from 01 to 29 inclusive will cause a split between the printing of the issue description and site name. So, for example, '20' would result in 20 characters of the issue description printing and 10 characters of the site name printing (<i>new feature on the 1.46.1 Release</i>).</p>
03 - 60	Not used	Leave blank

Stores – User Security

Table 6-5: BIUPDT USERSEC parameters for the BIUPDT module

COL	CONTROLS	DESCRIPTION
01	Access	Y Access allowed N Access not allowed
02	Override	Y Override fiscal year control dates N Honor fiscal year control dates
03	On-line Processing	1 Hard error processing for negative on-hand errors 2 Soft error processing for negative on-hand errors 3 No error processing for negative on-hand
04	On-line Processing	1 Check each account on the issue for the issue cost. If not enough funds, show error. Do not allow the process to continue. 2 Check each account on the issue for the issue cost. If not enough funds, show a warning, but allow the process to continue. 3 No dollar checking.
05	Auto-Post Processing	1 Hard error processing for negative on-hand errors 2 Soft error processing for negative on-hand errors 3 No error processing
06	Auto-Post Processing	1 Check each account on the issue for the issue cost. If not enough funds, show error. Do not allow the process to continue. 2 Check each account on the issue for the issue cost. If not enough funds, show a warning, but allow the process to continue. 3 No dollar processing.
07	Stores Receipt Processing	1 Hard error processing for negative on-hand error 2 Soft error processing for negative on-hand error 3 No error processing

Stores – User Security

Table 6-5: BIUPDT USERSEC parameters for the BIUPDT module - continued

COL	CONTROLS	DESCRIPTION
08	Stores Receipt Processing	<ol style="list-style-type: none"> 1 Check each account on the issue for the issue cost. If not enough funds, show error. Do not allow the process to continue. 2 Check each account on the issue for the issue cost. If not enough funds, show warning, but allow the process to continue. 3 No dollar checking.
09	Cross Funds	<ol style="list-style-type: none"> 1 Cross funds type two accounting 2 No cross fund type two accounting
10	GL-STORES	<ol style="list-style-type: none"> 1 Post all GL-STORES, BALPOST and CHECKAC records using the SITEDI JCW as the District. 2 Post all GL-STORES, BALPOST and CHECKAC records using the security variable STGLDI as the District. 3 Use logon district.
11	Default filter for search	<ol style="list-style-type: none"> 1 Show all back issues with a remaining balance. 2 Show back issues with remaining balance and positive SOH (default).
12	Site level security	<p>Y Enabled. N Disabled.</p>
13	Auto post	<p>Y Enabled. N Disabled.</p>
14	Access to online select option	<p>Y Enabled. N Disabled.</p>
15	Access to cancel outstanding option	<p>Y Enabled. N Disabled.</p>
16 - 60	Not used	Leave blank

Stores – User Security

Table 6-6: CRUPBT USERSEC parameters for the CRUPDT module

COL	CONTROLS	DESCRIPTION
01	Access to Add Batch command for CRUPDT	Y Enabled (default). N Disabled.
02	Options available	1 Inspect only. 2 All options.
03	District for posting transactions	1 Defined by SITEDI job control word. 2 Defined by the user security STGLDI.
04	Fiscal year control dates	Y Override. N Honor.
05	Posting to general ledger	1 Do not post to general ledger (GL-STORES and BAL-POST). 2 Post to general ledger.
06	Date	1 Allow any date in the fiscal year. 2 Force to current date.
07	Default row selection	Y All. N None.
08	Not used	Leave blank.
09	Not used	Leave blank.
10	Surcharges	Y Enabled. N Disabled.
11	Apply restocking fees	Y Enabled. N Disabled.
12	Automatic posting of back issues when posting credits	N Disabled (default). Y Enabled.
13 - 60	Not used	Leave blank

Stores – User Security

Table 6-7: CRUPDT USERSEC parameters for the CRUPDT module

COL	CONTROLS	DESCRIPTION
01	Access	Y Access allowed to program N No access allowed to program
02	Options	1 Inspect option only 2 All options
03	GL-STORES	1 Post all GL-STORES, BALPOST and CHECKAC records using the SITEDI JCW as the District. 2 Post all GL-STORES, BALPOST and CHECKAC records using the security variable STGLDI as the District. 3 Use logon district.
04	Override	Y Override fiscal year control dates N Honor fiscal year control dates
05	Post to GL	1 Do not post any records to GL with BALPOST or otherwise. 2 OK to post records to the GL.
06	Input Date	1 Allow user to input any date in fiscal year. 2 Set date to current date, do not allow user to change date.
07	Auto-post of back issues on update	Y Enabled. N Disabled.
08	Not used	Leave blank.
09	Surcharges	Y Enabled. N Disabled.
10	Restocking fee	Y Apply. N Do not apply.
11	Ability to display fully credited issue line items	N Limit display to items that are not fully credited (default). Y Display all line items, including those fully credited.
12 - 60	Not used	Leave blank

Stores – User Security

Table 6-8: FCUPDT USERSEC parameters for the FYUPDT module

COL	CONTROLS	DESCRIPTION
01	Access to Warehouse Fiscal Year Control (FYUPDT) master file	Y Enabled (default). N Disabled. When you double-click the master file name in the tree view, the message bar reads, "You do not have access to this module."
02	Maintenance options	1 Inspect and report only. 2 All options (default).
03 - 60	Not used	Leave blank.

Stores – User Security

Table 6-9: IAUPDT USERSEC parameters for the IAUPDT module

COL	CONTROLS	DESCRIPTION
01	Access	Y Access allowed to approval programs N No access allowed to approval programs
02	Access On-line Processing	Y Access allowed to on-line processing N No access allowed to on-line processing
03	Auto-Post Processing	Y Access allowed to auto-post processing N No access allowed to auto-post processing
04	Global Delete Processing	Y Access allowed to global delete processing N No access allowed to global delete processing
05	Override	Y Override fiscal year control dates N Honor fiscal year control dates
06	Auto-Post Processing	Y Approve only if issue does not exceed the edit high limits N Don't check issue edit high limits
07	Auto-Post Processing	Y Approve only if issue does not exceed the edit low limits N Don't check issue edit low limits
08	Auto-Post Processing	Y Approve only if issue does not exceed the maximum issue per fiscal year limits N Don't check maximum issue limits
09	On-line Process for Restricted Type Users	1 Check each account on the issue for the restricted field type and value. If ANY account contains these values, then allow the process to approve the issue. 2 Check each account on the issue for the restricted field type and value. If ALL accounts contain these values, then allow the process to approve the issue. 3 No restricted account checking.
10	Deleting an issue from IAUPDT	Y Enabled. N Disabled.
11 - 60	Not used	Leave blank

Stores – User Security

Table 6-10: ISUPDT USERSEC parameters for the ISUPDT module

COL	CONTROLS	DESCRIPTION
01	Access	Y Access allowed to program N No access allowed to program
02	Options	1 Inspect only option 2 Add, inspect only options 3 All options
03	Cancel Option	Y Cancel option allowed N Cancel option not allowed
04	Extend Option	Y Extend option allowed N Extend option not allowed P If picked, extend option not allowed
05	Override	Y Override fiscal year control dates N Honor fiscal year control dates
06	Processing	1* Hard error processing for negative on-hand errors 2 Soft error processing for negative on-hand errors 3 No error processing * Option 1 is highly recommended. It is required if you are doing back issues.

Stores – User Security

Table 6-10: ISUPDT USERSEC parameters for the ISUPDT module - continued

COL	CONTROLS	DESCRIPTION
07	Auto-Number	Y Auto-numbering enabled N No auto-numbering
08	Processing	1 Check each account on the issue for the issue cost. If not enough funds, show error. Do not allow process to continue. 2 Check each account on the issue for the issue cost. If not enough funds, show a warning, but allow process to continue. 3 No dollar checking
09	Cross Funds	1* Cross fund type two accounting 2 Not cross fund type two * Option 1: Cross fund type two accounting means that the warehouse operates out of the general fund but charges issues to other funds, causing Stores to automatically post to 9209 (accounts receivable). To enable the cross fund to repay the general fund, cut a check, and when the check is deposited it clears the receivable.
10	GL-STORES	1 Post all GL-STORES, BALPOST and CHECKAC records using the SITEDI JCW as the District 2 Post all GL-STORES, BALPOST and CHECKAC records using the security variable STGLDI as the District 3 Use logon district
11	GL Posting	1 Do not post any records to the GL with BALPOST or otherwise 2 OK to post records to GL
12	Back Issue	1* Back issues are allowed 2 Back issues are not allowed * If option 1 is used here, position 6 must also be option 1.
13	Approval Flags	If issue is pending and approval is required: 1 Approve levels 1, 2, and 3 immediately on update 2 Don't set approval flags immediately on update 3 Approve level 1 immediately on update 4 Approve level 2 immediately on update 5 Approve level 3 immediately on update
14	Auto-Calculate	1 Auto-calculate a back issue amount when the stock goes negative 2 Don't auto-calculate a back issue amount
15	Description Carry-over	Y Carry over the description when adding N Don't carry over the description

Stores – User Security

Table 6-10: ISUPDT USERSEC parameters for the ISUPDT module - continued

COL	CONTROLS	DESCRIPTION
16	Posting GL Control Date	When filling a pick list, post expense records to GLDSYS.D-STORES using the following date: Y or blank Use current software date at the moment the expense record is created. N Use the date from the original issue.
17	Delete Option	Y Delete option allowed N Delete option not allowed A If approved, delete option not allowed
18	Approval Flags	If there is a negative on-hand or negative balance: 0 or blank Don't set approval flags immediately on update 1 Approve level 1 immediately on update 2 Approve level 2 immediately on update 3 Approve level 3 immediately on update
19	Approval Flags for Restricted Accounts	1 Do not check for restricted accounts. Most sites use this option. 2 Check for restricted accounts. If the issue contains account class values restricted for the user, turn on the 'approval required' flag. See page 6-33 for a description of the user security for approvals.
20	Approval Flags for Blocked Accounts	1 Do not check for blocked (i.e. excluded) accounts. 2 Check for blocked accounts. If the issue contains account class values blocked from the user, the issue cannot be updated.
21	Extend After Approval	Y Extend allowed after approval N Extend not allowed after approval * If option Y is used here, position 4 must also use option Y.
22 - 60	Not used	Leave blank

Stores – User Security

Table 6-11: ISYRyy USERSEC parameters for the ISUPDT module and the IS1140 batch process ^a

COL	CONTROLS	DESCRIPTION
01	Sets whether added issues are considered "Live" or "Non-Live."	<p>L Live Issues (default). This is the normal way of adding issues during the current fiscal year.</p> <p>N Non-Live Issues. This is a special way of adding issues for the new fiscal year before the previous one is closed. For details, see "Using Non-Live (Suspended) Issues at the Start of a New Fiscal Year" in Chapter 5 of the <i>QCC Stores Manual</i>.</p>
02 - 60	Not used	Leave blank

a. Replace the yy with a 2-digit fiscal year, such as 14 for 2013-2014.

Table 6-12: KSUPDT USERSEC parameters for the KSUPDT module

COL	CONTROLS	DESCRIPTION
01	Access to Stock-Site Parameters (KSUPDT) master file	<p>Y Enabled (default).</p> <p>N Disabled. When you double-click the master file name in the tree view, the message bar reads, "You do not have access to this module."</p>
02	Maintenance options	<p>1 Inspect and report only.</p> <p>2 Inspect and add.</p> <p>3 All options (default).</p>
03	Fiscal year control dates	<p>N Honor fiscal year control dates (default).</p> <p>Y Override fiscal year control dates.</p>
04 - 60	Not used	Leave blank.

Stores – User Security

Table 6-13: PLUPDT USERSEC parameters for the PLUPDT module

COL	CONTROLS	DESCRIPTION
01	Access	Y Access allowed to pick list program N No access allowed to pick list program
02	Create Program	Y Access allowed to create pick list program N No access allowed to create pick list program
03	Print List	Y Access allowed to print pick list program N No access allowed to print pick list program
04	On-line View	Y Access allowed to on-line view/modify pick list N No access allowed to on-line view/modify pick list
05	Auto-Fill	Y Access allowed to auto-fill pick list program N No access allowed to auto-fill pick list program
06	Override	Y Override fiscal year control dates N Honor fiscal year control dates
07	Auto-Number	Y Auto-numbering enabled N No auto-numbering
08	Back Issues	1 Back issues are allowed 2 Back issues are not allowed
09	GL-STORES	1 Post all GL-STORES, BALPOST and CHECKAC records using SITEDI JCW as the District. 2 Post all GL-STORES, BALPOST and CHECKAC records using the security variable STGLDI as the District. 3 Use logon district.
10	Access to print distribution reports	Y Enabled. N Disabled.
11	Ability to fill a pick list immediately	Y Enabled. N Disabled.
12 - 60	Not used	Leave blank

Stores – User Security

Table 6-14: RC1100 USERSEC parameters for the RC1100 module

COL	CONTROLS	DESCRIPTION
01	Updating the CUP (chargeable unit price)	<p>N Do not recalculate CUP (default). Y Recalculate all stock items' CUP. A Recalculate CUP for stock items with automatic CUP (CUP calculation rule of A). M Recalculate CUP for stock items with manual CUP (CUP calculation rule of M).</p> <p>QSS recommends that you consult with your QSS account manager before using any option other than the default of N or blank.</p>
02	Ability to override date range	<p>Y Ability to override date range in Date from and to (default). The dates range is set to the start and end of the fiscal year, but you can change these defaults. N No ability to override date ranges.</p>
03 - 60	Not used	Leave blank

Stores – User Security

Table 6-15: SAUPDT USERSEC parameters for the SAUPDT module

COL	CONTROLS	DESCRIPTION
01	Access	Y Access allowed to program N No access allowed to program
02	Options	1 Inspect option only 2 All options
03	Affect G/L	Y Affect the G/L when the value changes N Don't affect the G/L when the value changes
04	Override	Y Override fiscal year control dates N Honor fiscal year control dates
05	Adjust Value	Y Allow user to adjust value of the stock N Don't allow user to adjust value of the stock
06	CUP	1 Freeze at old CUP 2* Freeze at new CUP 3 Freeze at user input CUP 4 User can select any CUP option * Most clients use option 2
07	Processing	1 Hard error processing for maximum on-hand errors 2 Soft error processing for maximum on-hand errors
08	Processing	1 Hard error processing for negative on-hand errors 2 Soft error processing for negative on-hand errors
09	AUP/CUP Processing	When two fiscal years are open for year-end processing: Y Auto update AUP for other open fiscal year, and Auto update CUP using CUP flag specified N Don't update AUP/CUP for other open fiscal year
10	Required or optional description for adjustments	N Optional description (default) Y Required description.
11	Default choice for the type of adjustment on the <i>Add Adjustment</i> form	A Adjustment (A) (default) R Replacement (R) L The last setting previously used for an adjustment
12 - 60	Not used	Leave blank

Stores – User Security

Table 6-16: SCUPDT USERSEC parameters for the SCUPDT module

COL	CONTROLS	DESCRIPTION
01	Access to Stock Class (SCUPDT) master file	Y Enabled (default). N Disabled. When you double-click the master file name in the tree view, the message bar reads, "You do not have access to this module."
02 - 60	Not used	Leave blank.

Table 6-17: SKINSP USERSEC parameters for the SKINSP module

COL	CONTROLS	DESCRIPTION
01	Access	Y Access allowed to inspect stock program N Access not allowed to inspect stock program
02	Extended Description	Y Display extended description N Do not display extended description
03 - 60	Not used	Leave blank

Stores – User Security

Table 6-18: SKTFRS USERSEC parameters for the SKTFRS module

COL	CONTROLS	DESCRIPTION
01	Access	Y Access allowed to program N No access allowed to program
02	Stock Item	Y Can create a new stock item in TO warehouse N No new stock items allowed
03	Affect G/L	Y Affect the G/L when the value changes N Don't affect the G/L when the value changes
04	Auto Update	When two fiscal years are open for year-end processing: Y Auto update AUP for other open fiscal year, and Auto update CUP using rules for that year. N Don't update AUP/CUP for other open fiscal year.
05	Override	Y Override fiscal year control dates N Honor fiscal year control dates
06	AUP/CUP	1 Set AUP to be equal to the CUP when the 'From' AUP is not equal to the 'To' AUP 2 Use the CUP rules and calculate a new CUP when the 'From' AUP is not equal to the 'To' AUP
07 - 60	Not used	Leave blank

Stores – User Security

Table 6-19: SK1205 USERSEC parameters for the SK1205 module

COL	CONTROLS	DESCRIPTION
01	Printing stock class on report	N Do not print stock class on the report (default). Y Print the stock class on the report (<i>new feature for 1.46.1 Release</i>).
02 - 60	Not used	Leave blank

Table 6-20: SKTRCK USERSEC parameters for the SKTRCK module

COL	CONTROLS	DESCRIPTION
01	Excluding transactions with zero quantity	I Include transactions with a zero quantity in the Stock Item Activity Tracking report (default). X Exclude transactions with a zero quantity.
02 - 60	Not used	Leave blank

Stores – User Security

Table 6-21: SKUPDT USERSEC parameters for the SKUPDT module

COL	CONTROLS	DESCRIPTION
01	Access to the Stock Items (SKUPDT) master file	Y Enabled (default). N Disabled. When you double-click the master file name in the tree view, the message bar reads, "You do not have access to this module."
02	Maintenance options	1 Inspect only. 2 Inspect and add. 3 All options (default).
03	Affect general ledger	N Do not affect general ledger when updating a stock item (default). Y Affect general ledger when updating a stock item.
04	Fiscal year control dates	N Honor fiscal year control dates (default). Y Override fiscal year control dates.
05	Change box	N Can't change price last data and last info data (default). Y Can change price data and last info data.
06	Auto update	Y Auto update AUP for other open fiscal year. Auto update CUP using surcharge rules for that fiscal year (default). N Don't update AUP and CUP for other open fiscal year.
07	Fiscal year changes	N Disallow changes to prior fiscal year values (default). Y Allow changes to prior fiscal year values.
08	Auto update other open fiscal year	Y Update. N Do not update.

Stores – User Security

Table 6-21: SKUPDT USERSEC parameters for the SKUPDT module - continued

COL	CONTROLS	DESCRIPTION
09	Special function that copies a stock item's CUP to AUP when a stock item is set to <i>manually</i> maintain the CUP	<p>N Special function disabled (default). Y Special function enabled.</p> <p>NOTE: This special function should only be used after consultation with a customer's QSS Account Manager. <i>Enabling it could result in unintended changes to the AUP that will be extremely difficult to correct. QSS assumes no responsibility for a customer's use of this special function, and any assistance by QSS to recover a customer's AUP for a stock item after the customer enables this special function will be a chargeable event.</i></p>
10	For adding Issues, limiting the Stock Lookup function to the stock catalog	<p>N On the <i>Stock Items Maintenance</i> dialog box, the Stock Lookup function includes all stock items, even those not in the stock catalog (default). Y The Stock Lookup function includes only stock items with the Include stock item in catalog check box selected in the Stock Items master file.</p>
11	For adding issues, limiting the Stock Lookup function to stock items with a stock-site parameter record	<p>N On the <i>Stock Items Maintenance</i> dialog box, the Stock Lookup function does not use the Stock-site master file to limit the scope of the search (default). Y The Stock Lookup function includes only stock items that have a record in the Stock-Site master file for the user's site.</p>
12	For adding issues, use of stock-site parameter record settings	<p>N Use the stock item record in the Stock Items master file for Issue edit low, Issue edit high, Max issues per site per FY, and Max backissued. Y Use the stock-site parameter record for a site to override the settings in the Stock Items master file.</p>
13	For adding Orders, limiting the Stock Lookup function to the stock catalog	<p>N On the <i>Orders Maintenance</i> dialog box, the Stock Lookup function includes all stock items, even those not in the stock catalog (default). Y The Stock Lookup function includes only stock items with the Include stock item in catalog check box selected in the Stock Items master file.</p>
14	For the Stock Items node, limiting the search for stock items to those in the stock catalog	<p>N On the Stock Items search form, the Stock Lookup function includes all stock items, even those not in the stock catalog (default). Y The Stock Lookup function includes only stock items with the Include stock item in catalog check box selected in the Stock Items master file.</p>
15 - 60	Not used	Leave blank.

Stores – User Security

Table 6-22: SO1200 USERSEC parameters for the SO1200 module

COL	CONTROLS	DESCRIPTION
01	Printing vendor number and name	N Do not print vendor number and name on the report (default). Y Print the vendor number and name on the report (<i>new feature for the 1.46.1 Release</i>).
02 - 60	Not used	Leave blank

Table 6-23: SOUPDT USERSEC parameters for the SOUPDT module

COL	CONTROLS	DESCRIPTION
01	Access	Y Access allowed to program N No access allowed to program
02	Options	1 Inspect option only 2 Add, inspect options only 3 All options
03	Override	Y Override fiscal year control dates N Honor fiscal year control dates
04	Processing	1 Hard error processing for maximum on-hand errors 2 Soft error processing for maximum on-hand errors
05	Auto-Number	Y Auto-numbering enabled N No auto-numbering
06 - 60	Not used	Leave blank

Stores – User Security

Table 6-24: SRUPDT USERSEC parameters for the SRUPDT module

COL	CONTROLS	DESCRIPTION
01	Access	Y Access allowed to program N No access allowed to program
02	Options	1 Inspect only option 2 Add, inspect only options 3 All options Use col 06 and 11 - 17 to define the options for the <i>Add Receipt</i> form. Col 18 - 26 apply to the <i>Batch Add Receipts</i> form.
03	Override	Y Override fiscal year control dates N Honor fiscal year control dates

Stores – User Security

Table 6-24: SRUPDT USERSEC parameters for the SRUPDT module - continued

COL	CONTROLS	DESCRIPTION
04	Auto-Number	Y Auto-numbering enabled N No auto-numbering
05	Auto-Generate	Y Allow auto-generate of an order N Don't allow auto-generate of an order
06	CUP	1 Freeze at old CUP 2* Freeze at new CUP 3 Freeze at user input CUP 4 User can select any CUP option * Most clients use option 2
07	Processing	1 Hard error processing for maximum on-hand errors 2 Soft error processing for maximum on-hand errors
08	Processing	1 Hard error processing for negative on-hand errors 2 Soft error processing for negative on-hand errors
09	Auto-Update	When two fiscal years are open for year-end processing: Y Auto update AUP for other open fiscal year, and Auto update CUP using CUP flag specified N Don't update AUP/CUP for other open fiscal year
10	Affect G/L	Y Affect the G/L when the value changes N Don't affect the G/L when the value changes C Affect the G/L with consolidated posting by account if the Budget acct control is 1 - Collapse by acct in the Warehouse Parameters master file, as described in Chapter 3 of the <i>QCC Stores Manual</i> . If your warehouse uses the consolidated posting, you must use option C to use that option to collapse by account for Stores receipts.
11	Auto-Post	Y Auto-post back issues on update N Don't post back issues
12	Auto-Calculate	Y Auto-calculate on back order amount N Don't auto-calculate on amount
13	Changes to unit pricing with receiving	Y Allowed N Not allowed
14	Changes to handling charges when receiving	Y Allowed N Not allowed
15	Changes to sales tax when receiving	Y Allowed N Not allowed
16	Entry of damaged quantities when receiving	Y Allowed N Not allowed
17	Entry of back order quantities	Y Allowed N Not allowed

Stores – User Security

Table 6-24: SRUPDT USERSEC parameters for the SRUPDT module - continued

COL	CONTROLS	DESCRIPTION
18	Auto receiving of an entire order (<i>Add Receipts Batch</i> form)	Y Allowed N Not allowed Use col 19 - 26 to set up receiving options for the <i>Add Receipts Batch</i> form.
19	CUP	1 Freeze at old CUP 2* Freeze at new CUP 3 Freeze at user input CUP 4 User can select any CUP option * Most clients use option 2
20	Auto-Post	Y Auto-post back issues on update N Don't post back issues
21	Auto-Calculate	Y Auto-calculate on back order amount N Don't auto-calculate on amount
22	Changes to unit pricing with receiving	Y Allowed N Not allowed
23	Changes to handling charges when receiving	Y Allowed N Not allowed
24	Changes to sales tax when receiving	Y Allowed N Not allowed
25	Entry of damaged quantities when receiving	Y Allowed N Not allowed
26	Entry of back order quantities	Y Allowed N Not allowed
27	Ability to change unit of order (UOO) and unit of issue (UOI)	Y Allowed on the <i>Add Receipts Batch</i> form (Ratio Ord/Iss box) and the <i>Add Receipts</i> form (Ratio Ord and Issue boxes). N Not allowed.
28 - 60	Not used	Leave blank

Stores – User Security

Table 6-25: SSUPDT USERSEC parameters for the SSUPDT module

COL	CONTROLS	DESCRIPTION
01	Access to Warehouse Parameters (SSUPDT) master file	Y Enabled (default). N Disabled. When you double-click the master file name in the tree view, the message bar reads, "You do not have access to this module."
02 - 60	Not used	Leave blank.

Table 6-26: STEDELIM USERSEC parameters for the SK1200 module

COL	CONTROLS	DESCRIPTION
01 - 04	Lines of expanded stock description to print on the Stock Status (SK1200) report	Type a 4-character delimiter code, such as *NPR The SK1200 report prints only the part of the expanded description up to the delimiter. When the report encounters the delimiter, the report stops printing the expanded description.
05 - 60	Not used	Leave blank

Table 6-27: STGLDI USERSEC parameters for the SKTRCK module

COL	CONTROLS	DESCRIPTION
01 - 02	Access	## Post all G/L records for issues, back issues and credits using this district's number
03 - 60	Not used	Leave blank

Stores – User Security

Table 6-28: STRCWACC USERSEC parameters for the STORES module

COL	CONTROLS	DESCRIPTION
01	Ability to change the default warehouse	Y Enabled. N Disabled.
02 - 60	Not used	Leave blank

Table 6-29: STRFYACC USERSEC parameters for the STORES module

COL	CONTROLS	DESCRIPTION
01 - 02	Access to fiscal years	[blank] Logon year only (default). ** Any fiscal year. ## Access allowed to a specific fiscal year. The ## stands for a 2-digit fiscal year, such as 09 for FY 2008-2009.
03 - 60	Up to 29 additional fiscal years	If you are specifying fiscal years, type up to 29 additional fiscal years. Type each fiscal year as a 2-digit number. For example, type fiscal years 07, 08, 09, 10, and 11 like this: 0708091011

Stores – User Security

Table 6-29: STRFYACC USERSEC parameters for the STORES module

COL	CONTROLS	DESCRIPTION
01 - 02	Access to fiscal years	[blank] Logon year only (default). ** Any fiscal year. ## Access allowed to a specific fiscal year. The ## stands for a 2-digit fiscal year, such as 09 for FY 2008-2009.
03 - 60	Up to 29 additional fiscal years	If you are specifying fiscal years, type up to 29 additional fiscal years. Type each fiscal year as a 2-digit number. For example, type fiscal years 07, 08, 09, 10, and 11 like this: 0708091011

Table 6-30: STRSIACC USERSEC parameters for the STORES module

COL	CONTROLS	DESCRIPTION
01 - 04	Access to sites	[blank] Access to logon site only (default). **** Access to all sites. #### Access to a specific 4-digit site number. Replace the #### with a 4-digit site number, such as 0043.
05 - 60	Up to 14 additional sites	If you are specifying sites, type up to 14 additional site numbers. Type each site as a 4-digit number. For example, type sites 301, 500, and 1000 like this: 030105001000

Stores – User Security

Table 6-31: STRSLCTL USERC parameters for the STORES module

COL	CONTROLS	DESCRIPTION
01	Rules for manual entry of stock item numbers while adding an Issue	N Allow any stock item in the Stock Items master file (default). Y Stock items are restricted by the rules in col 10 to 12 of the SKUPDT user security on page 6-26 .
02	Rules for manual entry of stock item numbers while adding an Order	N Allow any stock item in the Stock Items master file (default). Y Stock items are restricted by the rules in col 13 of the SKUPDT user security on page 6-26 .
03 - 60	Not used	Leave blank

Table 6-32: STRWHACC USERSEC parameters for the STORES module

COL	CONTROLS	DESCRIPTION
01 - 02	Access to warehouses	[blank] Logon warehouse only (default). ** Any warehouse. ## Access allowed to a specific warehouse. Replace the ## with a 2-digit number, such as 01 for warehouse 1.
03 - 60	Up to 29 additional warehouses	If you are limiting access to specified warehouses, type up to 29 additional warehouse numbers. Type each warehouse as a 2-digit number. For example, type warehouses 3, 8, 15, and 21 like this: 03081521

Stores – User Security

Table 6-33: STRYRE USERSEC parameters for the FY1200 and FY1300 modules

COL	CONTROLS	DESCRIPTION
01	FY1200 access	Y Access allowed to Stores Year End Processing (FY1200) (default). N Access not allowed to fiscal year end processing.
02	FY1200 fiscal year selection	Y Access to selecting the fiscal year. N Ability to select the fiscal year is disabled (default).
03	FY1300 access	N No access allowed to Stores Encumbrance Report (FY1300) (default). Y Access allowed.
Col 03 - 06 are for Version L only.		
04	FY1300 post date rule for correction transactions	1 Use earliest encumbrance date found for each issue/account encumbrance set of transactions needing correction . 2 Use latest encumbrance date found for each issue/account encumbrance set of transactions needing correction. 3 User can select date to use on the FY1300 report request form. <i>No default, setting must be 1, 2, or 3. If it is not then update mode is automatically disabled and only report mode can be used.</i>
05	Must FY1300 report be run in update mode only after FY1200 has completed steps 1 and 2?	Y Can only be run in update mode after all steps for FY1200 (default). N Can be run in update mode at any time during the fiscal year.
06	FY1300 report mode control	1 Can only be run in report mode (default) . 2 Can be run in both report mode and update mode.
07 - 60	Not used	Leave blank

Stores – User Security

Table 6-34: SXUPDT USERSEC parameters for the SXUPDT module

COL	CONTROLS	DESCRIPTION
01	Access to Warehouses (SXUPDT/1), Warehouse Locators (SXUPDT/2), and Sites (SXUPDT/3) master files	Y Enabled (default). N Disabled. When you double-click the master file name in the tree view, the message bar reads, "You do not have access to this module."
02 - 60	Not used	Leave blank.

Table 6-35: WSUPDT USERSEC parameters for the WSUPDT module

COL	CONTROLS	DESCRIPTION
01	Access to Warehouse-Site Parameters (WSUPDT) master file	Y Enabled (default). N Disabled. When you double-click the master file name in the tree view, the message bar reads, "You do not have access to this module."
02 - 60	Not used	Leave blank.

Stores – User Security

6.3.3 ATTCHxx and ATTFSxx User Security for Attachments (Version L Only)

Version L of QSS/OASIS allows you to create and manage the following types of attachments:

- ◆ BI - Back Issues (BIUPDT) form
- ◆ CR - Credits Maintenance (CRUPDT) form
- ◆ IS - Issues Maintenance (ISUPDT) form
- ◆ SA - Stock Adjustments (SAUPDT) form
- ◆ SO - Stores Orders (SOUPDT) form
- ◆ SR - Stores Receipts (SRUPDT) form
- ◆ SK - Stock Items (SKUPDT) form

The *Attachments Information* dialog box allows you to add, inspect, and delete attachments as links to Web pages or imported files in PDF, Word, and other supported formats.

Table 6-50: ATTCHxx USERSEC parameters for the Stores System transactions

COL	CONTROLS	DESCRIPTION
01	VERSION L ONLY Ability to link to attachments for transactions	<p>0 Disabled (default). The Launch Attachments command is not enabled on the Options menu or toolbar.</p> <p>1 Inspect-only access. Users can select the Launch Attachments command to display attachments that are in place from the <i>Attachments Information</i> dialog box.</p> <p>2 Ability to add, change, and delete links. Users can add links to an existing file and create comments about the linked file with the <i>Attachments Information</i> dialog box.</p>
02 - 60	Not used	Leave blank.

Stores – User Security

Table 6-51: ATTFS USERSEC parameters for the STORES module

COL	CONTROLS	DESCRIPTION
01 - 06	VERSION L ONLY The maximum size of individual attachments	Type a 6-digit number to indicate the number of kilobytes, such as 000222 for 222 KB or 001024 (1024KB or 1MB). To get the number of bytes, multiply the number of KB by 1024. This maximum applies to <i>all</i> types of attachments that do not have their own ATTFSxx user security records.
07 - 60	Not used	Leave blank.

Table 6-52: ATTFSxx USERSEC parameters for the STORES module

COL	CONTROLS	DESCRIPTION
01 - 06	VERSION L ONLY The maximum size for attachments to attachment type xx	Type a 6-digit number to indicate the number of kilobytes, such as 000222 for 222 KB or 001024 (1024KB or 1MB). To get the number of bytes, multiply the number of KB by 1024.
07 - 60	Not used	Leave blank.

Stores – Module

The screenshot displays the QSS ControlCenter application window. The title bar shows '39 - QSS DEMO(the train 29410)' and 'QSS/OASIS (0.0.0)'. The menu bar includes 'File', 'View', 'District', 'Year', 'Messages', 'Window', 'News', and 'Help+Video'. The main area is a tree view of modules. A blue arrow points to the 'Stores Maintenance and Reporting' module, which is located under the 'Fixed Assets / Stores' folder. Other visible modules include 'Print Manager / Job Menu / Utilities', 'System Admin', 'Finance', 'Fixed Assets', 'Fixed Asset Tracking / Inventory', 'Fixed Assets Job Menu', 'Fixed Assets Masterfiles', 'W2 / 1099', 'W2 / 1099 Processing', 'Human Resources / Payroll', 'Employee Maintenance', 'Absence Tracking', 'Retirement', 'ACA Management', 'HR Reporting and Downloading', 'HR Report / Job Selector', 'Personnel Downloader', 'HR Query', 'CTC Credential Display', 'Absence Tracking Job Menu', 'Benefits Management Job Menu', 'Payroll Job Menu', 'Position Control Job Menu', 'Master Files / Utilities', 'HR Code Maintenance', 'HR Code Maintenance #2', 'HR Utilities', and 'Payroll Batching / Time and Attendance'. The status bar at the bottom shows 'Last Run: 11/27/2018 18:17:24' and 'Yr:2008 Dist:39 Site:0 GS: W 11/29/2018 9:52 AM'.

Stores – Warehouse Setup

The screenshot displays the 'Stores - Warehouses (SXUPDT/1)' application window. The main window has a menu bar with 'File', 'Options', and 'Help+Video'. Below the menu is a toolbar with various icons. A search bar at the top left contains the text 'Search tree for modules...'. The left sidebar shows a tree view of modules, with 'Warehouses (SXUPDT/1)' selected and highlighted by a blue arrow. The main content area is titled 'Warehouses (SXUPDT/1)' and contains a form with the following fields:

- Warehouse No from: to
- Warehouse name:
- Audit ID:

Below the form is a table with the following columns: Acc, WH, WH Name, Added by, Add date, Changed by, Change date, Time.

An 'AddMode' dialog box is open in the foreground, titled 'Warehouse Maintenance'. It has a menu bar with 'File' and 'Options'. The dialog contains the following fields:

- Warehouse No:
- Name:
- Abbrev:

Below the fields is a text area with the following text:

Added by: Don Hemwall on: ??/??/???? at: ??:??:??
Changed by: Don Hemwall on: ??/??/????

The status bar at the bottom of the application shows: Yr: 2008 Dist: 39 Site: 00 GS: W 11/29/2018 10:10:41 AM

Stores – Warehouse Setup

Warehouses (SXUPDT/1)

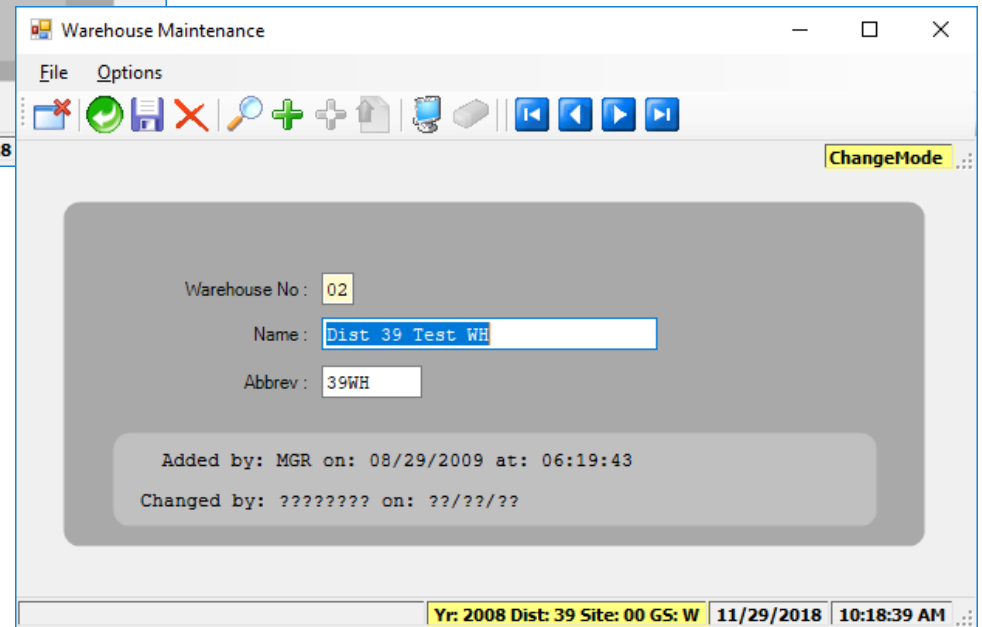
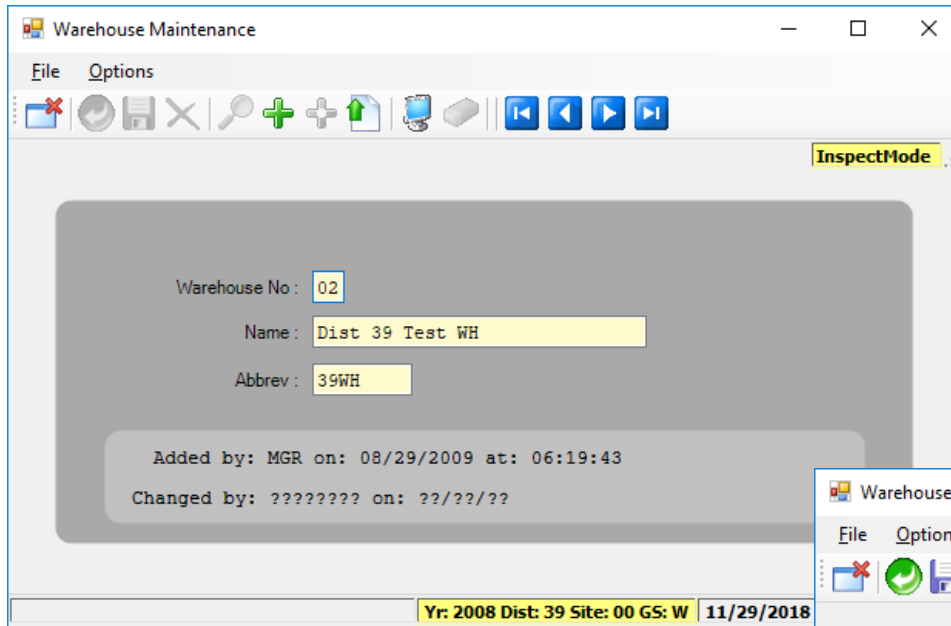
Warehouse No from: to

Warehouse name:

Audit ID:

	Acc	WH	WH Name	Added by	Add date	Changed by	Change date	Time
1	<input checked="" type="checkbox"/>	02	Dist 39 Test WH	MGR	08/29/2009			06:19:43

Stores – Warehouse Setup



Stores – Warehouse Setup

Warehouse Parameters Maintenance

File Options

Warehouse No: 01 TEST WAREHOUSE FY: 08

Warehouse Control

Default purchase tax percent for orders: 7.7500

Add warehouse surcharge to AUP?: N - No Surcharge %:

Warehouse restocking fee: (Dollar/Percentage)

Stock item edits: Stock Classifications Warehouse Locations

Issue approval required: Level 1 Level 2 Level 3 Restricted level:

Issue extend maximum number of days: 0010 (blank/0000 = unlimited)

Issue date control: 2 - Use date control

Issue last date in FY month: J 31 A 31 S 30 O 31 N 30 D 31 J 31 F 29 M 31 A 30 M 31 J 30

Financial Control Stores integrated with GL

Budget acct control: 1 - Collapse by acct Post Mode: E - Encumber issues first

FD-RESC-Y-OBJT.SO-GOAL-FUNC-SCH-DD1-DD2

WH asset: L 01-0000-0-9320.00-0000-0000-000-000-000 Stock class surcharge: L 01-0100-0-4300.00-0000-7540-860-000-000

WH surcharge: L 01-0100-0-4300.00-0000-7540-860-000-000 Stock class restocking fee: L 01-0100-0-4300.00-0000-7540-860-000-000

WH revaluation: L 01-0100-0-4300.00-0000-7540-860-000-000 Stock item surcharge: L 01-0100-0-4300.00-0000-7540-860-000-000

WH restocking: L 01-0100-0-4300.00-0000-7540-860-000-000 Stock item restocking fee: L 01-0100-0-4300.00-0000-7540-860-000-000

GL Offset objects: Adjustments: 9320 Receipts: 9320 New stock items: 9320

Added by: DISC on: 07/16/2007 Changed by: TSC1 on: 10/01/2007 at: ??:??:??

Yr: 2008 Dist: 24 Site: 00 GS: W 11/29/2018 10:25:06 AM

Stores – Fiscal Year Control

FY Control Maintenance

File Options

InspectMode

Warehouse No: 01 TEST WAREHOUSE

FY: 08 FY Status: Closed-WH is closed for FY

Date open: 07/16/2007 Date closed: 06/30/2008

Transaction type	Start date	End date
AD - Adjustments	07/16/2007	06/30/2008
BI - Back Issues	07/16/2007	06/30/2008
BO - Back Orders	07/16/2007	06/30/2008
CA - Cancel Issues	07/16/2007	06/30/2008
CR - Credits	07/16/2007	06/30/2008
IS - Issues	07/16/2007	06/20/2008
SO - Stores Orders	07/16/2007	06/20/2008
SR - Stores Receipts	07/16/2007	06/30/2008
SK - New Stock Item	07/16/2007	06/30/2008

Added by: DISC on: 07/16/2007

Changed by: DISC on: 08/05/2008 at: ??:??:??

Yr: 2008 Dist: 24 Site: 00 GS: W 11/29/2018 10:26:31 AM